

## PART LIST

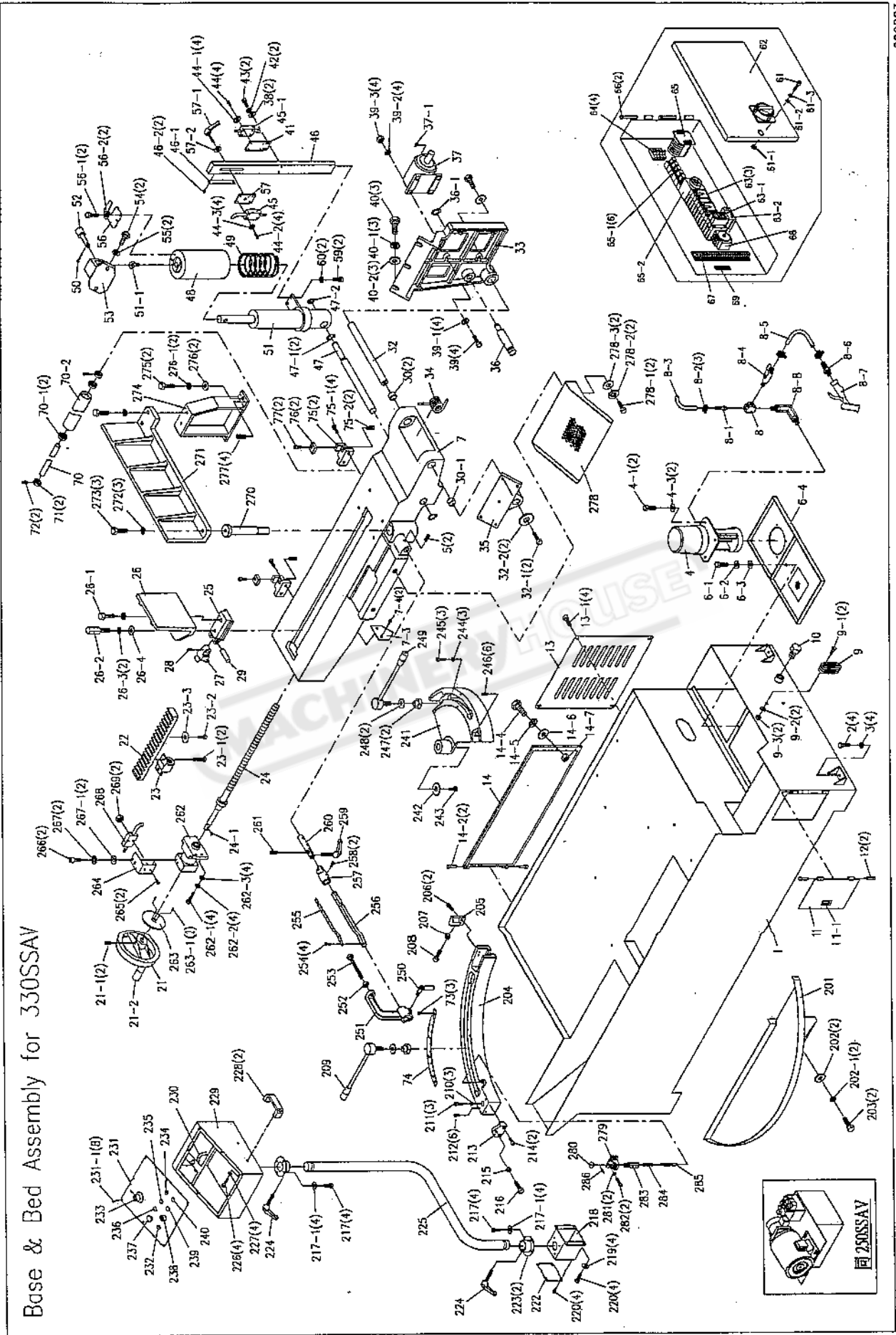
Part No.	Description	Size No.	Q'ty	Part No.	Description	Size No.	Q'ty
1	Base		1	35	Supporting Seat		1
2	Hex. Cap Bolt	M12×65	4	36	Pivot Support Shaft		1
3	Nut	M12	4	36-1	C-Ring	S22	1
4	Coolant Pump	1/6HP	1	37	Motor	3HP, 3PH	1
4-1	Round Head Screw	M6×16	2	37-1	Key	8×7×50	1
4-3	Flat Washer	M6	2	38	Flat Washer	M6	2
5	Set Screw	M8×16	2	39	Hex. Cap Bolt	M10×55	4
6-1	Round Head Screw	M6×16	1	39-1	Flat Washer	M10	4
6-2	Spring Washer	M6	1	39-2	Spring Washer	M10	4
6-3	Washer	M6	1	39-3	Nut	M10	4
6-4	Coolant Tank Cover		1	40	Hex. Cap Bolt	M12×50	3
7	Bed		1	40-1	Spring Washer	M12	3
7-3	Indicator		1	40-2	Washer	M12	3
7-4	Hex. Socket Cap Screw	M5×8	2	41	Switch Mounting Plate		1
8	Connector		1	42	Spring Washer	M6	2
8-1	Hose Fitting		1	43	Hex. Cap Bolt	M6×12	2
8-2	Hose Clamp		3	44	Round Head Screw	M5×35	4
8-3	Hose	3/8" ×1200	1	44-1	Spring Washer	M5	4
8-4	On/Off Valve		1	44-2	Round Head Screw	5/32×1/4	4
8-5	Hose	3/8" ×2800	1	44-3	Spring Washer	5/32	4
8-6	Hose Fitting		1	45	Limit Switch	5101	1
8-7	Water Gun		1	45-1	Roller limit Switch	5102	1
8-8	Connector		1	46	Adjusting Bracket		1
9	Coolant Gauge		1	46-1	Scale		1
9-1	Pan Head Screw	M10×30	2	46-2	Rivet		2
9-2	Washer	M10	2	47	Cylinder Supporting Rod		1
9-3	Nut	M10	2	47-1	C-Ring	S32	2
10	Drain Plug		1	47-2	C-Ring	S28	1
11	Plate		1	48	Cylinder Cover		1
11-1	Cover Lock		1	49	Spring		1
12	Hinge		2	50	Pin		1
13	Plate		1	51	Cylinder Assembly		1
13-1	Hex. Socket Cap Screw	M6×8	4	51-1	Holder		1
14	Electrical Box Door		1	52	Lock Pin		1
14-2	Hinges		2	53	Top Mounting Plate		1
14-4	Round Head Screw	M6×30	1	54	Hex. Cap Bolt	M12×35	2
14-5	Spring Washer	M6	1	55	Spring Washer	M12	2
14-6	Washer	M6	1	56	Plate		1
14-7	Nut	M6	1	56-1	Hex. Cap Bolt	M6×12	2
21	Hand Wheel		1	56-2	Spring Washer	M6	2
21-1	Set Screw	5/16" ×3/8	1	57	Switch Mounting Plate		1
21-2	Handle	3/8	1	57-1	Handle		1
22	Rack		1	57-2	Washer	M10	1
23	Lead Screw Seat		1	59	Hex. Socket Cap Screw	M8×25	2
23-1	Hex. Socket Cap Screw	M8×16	2	60	Spring Washer	M6	2
23-2	Hex. Socket Cap Screw	M8×20	1	61	Hex. Socket Cap Screw	M6×30	1
23-3	Flat Washer	M8	1	61-1	Nut	M6	1
24	Lead Screw		1	61-2	Washer	M6	3
24-1	Key	6×6×25	1	61-3	Spring Washer	M6	1
25	Slide Bracket		1	62	Electric Cabinet Box		1
26	Vise Jaw-Left		1	63	Contact		3
26-1	Hex. Cap Bolt	M12×40	1	63-1	Sub-Connector		1
26-2	Locking Bolt	M12×45	1	63-2	Overload Relay		1
26-3	Spring Washer	M12	2	64	Fuse		4
26-4	Washer	M12×35×5W	1	65	Transformer		1
27	Rack Block		1	65-1	Relay		6
28	Set Screw	M6×8	1	65-2	Timer		1
29	Pin		1	66	Pin		2
30	Bearing	3020	2	67	Terminal Strip		1
30-1	Spacer		1	68	Main Door Power Switch		1
32	Pivot Shaft		1	69	Grounding Plate		1
32-1	Hex. Cap Bolt	M12×20	2	70	Rod		1
32-2	Washer	M12	2	70-1	Ball Bearing	6004ZZ	2
33	Pivot Bracket		1	70-2	Feeding Roller		1
34	Spring		1	71	Bushing		2

## PART LIST

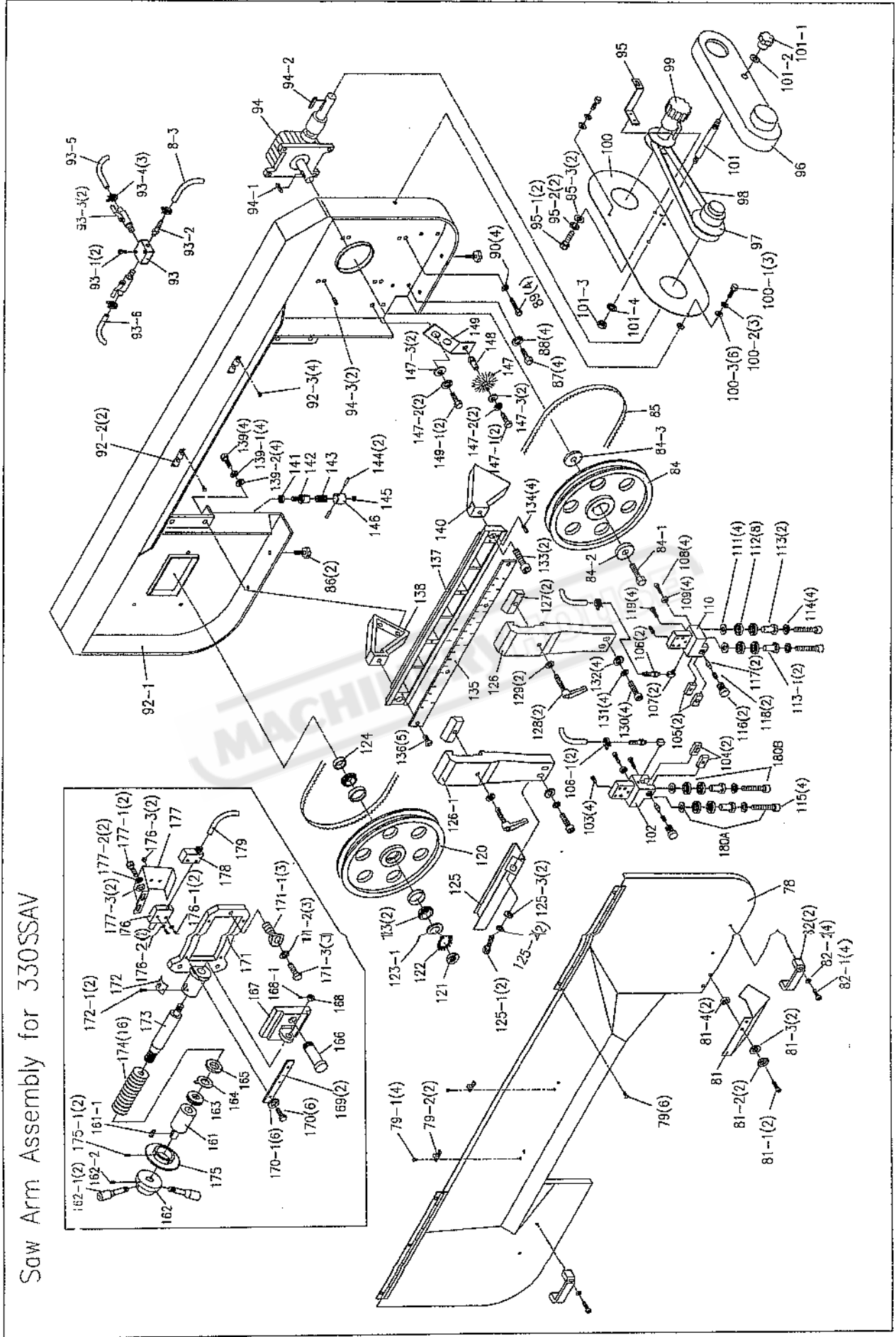
Part No.	Description	Size No.	Q'ty	Part No.	Description	Size No.	Q'ty
72	Set Screw	M6×8	2	106-1	Hose Clamp		2
73	Rivet		3	107	Connector		2
74	Scale		1	108	Hex. Socket Cap Screw	M8×30	4
75	Roller Bracket		2	109	Ball Bearing	608ZZ	4
75-1	Hex. Socket Cap Screw	M8×20	4	110	Guide Bracket-Right		1
75-2	Set Screw	M10×10	2	111	Flat Washer	M8	4
76	Plate		2	112	Ball Bearing	6201RS	8
77	Hex. Socket Cap Screw	M6×16	2	113	Sleeve		2
78	Blade Wheel Cover		1	113-1	Eccentric Sleeve		2
79	Round Head Screw	M6×10	6	114	Spring Washer	M8	4
79-1	Flat Head Screw	5/32×1/4	4	115	Hex. Socket Cap Screw	M8×45	4
79-2	Lock Pin		2	116	Adjusting Knob		2
81	Brush Cover		1	117	Shaft		2
81-1	Hex. Cap Bolt	M6×12	2	118	Spring		2
81-2	Spring Washer	M6	2	119	Hex. Socket Cap Screw	M6×16	4
81-3	Flat Washer	M6	2	120	Idle Wheel		1
81-4	Nut	M6	2	121	Jam Nut	M30	1
82	Handle		2	122	Star Washer	M30	1
82-1	Round Head Screw	M6×16	4	123	Ball Bearing	30206	2
82-2	Washer	M6	4	123-1	Ball Bearing Cover		1
84	Drive Wheel		1	124	Spacer		1
84-1	Hex. Cap Bolt	M12×20	1	125	Blade Guard		1
84-2	Washer	M12	1	125-1	Hex. Cap Bolt	M8×16	2
84-3	Bushing		1	125-2	Spring Washer	M8	2
85	Saw Blade	34×4100mm	1	125-3	Washer	M8	2
86	Knob	1/4×13	2	126	Adjusting Bracket Mount-Right		1
87	Hex. Cap Bolt	M10×30	4	126-1	Adjusting Bracket Mount-Left		1
88	Spring Washer	M10	4	127	Lock Block		2
89	Hex. Cap Bolt	M12×35	4	128	Handle	3/8×1 1/2	2
90	Spring Washer	M12	4	129	Washer	M10	2
92-1	Saw Arm		1	130	Hex. Socket Cap Screw	M10×40	4
92-2	Lock Seat		2	131	Spring Washer	M10	4
93	Connector		1	132	Washer	M10	4
93-1	Hex. Socket Cap Screw	M6×25	2	133	Hex. Socket Cap Screw	M12×25	2
93-2	Hose Fitting		1	134	Set Screw	M8×10	4
93-3	On/Off Valve		2	135	Scale		1
93-4	Hose Clamp	15mm	3	136	Round Head Screw	M5×10	5
93-5	Hose	5/16" ×900	1	137	Slide Bracket		1
93-6	Hose	5/16" ×1640	1	138	Bracket -Left		1
94	Gear Box		1	139	Hex. Cap Bolt	M12×30	4
94-1	Key	12×8×32	1	139-1	Spring Washer	M12	4
94-2	Key	7×7×40	1	139-2	Flat Washer	M12	4
94-3	Set Screw	M10×12	2	140	Bracket-Right		1
95	Plate		1	141	Nut	M12	1
95-1	Hex. Cap Bolt	M6×12	2	142	Stop Support		1
95-2	Spring Washer	M6	2	143	Spring		1
95-3	Washer	M6	2	144	Pin	M4×32	2
96	Pulley Cover		1	145	Rubber Pad		1
97	Input Pulley		1	146	Stop Block		1
98	Belt	1922V443	1	147	Chip Brush		1
99	Variable Speed Adjustable		1	147-1	Hex. Cap Bolt	M6×12	2
100	Cover Plate		1	147-2	Spring Washer	M6	4
100-1	Hex. Cap Bolt	M8×16	3	147-3	Washer	M6	4
100-2	Spring Washer	M8	3	148	Pin		1
100-3	Washer	M8	6	149	Brush Bracket		1
101	Shaft		1	149-1	Hex. Cap Bolt	M6×12	2
101-1	Knob		1	161	Extension Bar		1
101-2	Washer	5/16"	1	161-1	Key	5×5×30	1
101-3	Nut	5/16"	1	162	Handle Base		1
101-4	Spring Washer	5/16"	1	162-1	Handle		2
102	Guide Bracket-Left		1	162-2	Set Screw	M8×10	1
103	Set Screw	M8×16	4	163	Thrust Bearing	51105	1
104	Blade Guide-Left		2	164	Indicator Scale		1
105	Blade Guide-Right		2	165	Spacer		1
106	Connector		2	166	Blade Wheel Bracket Shaft		1

## PART LIST

Part No.	Description	Size No.	Q'ty	Part No.	Description	Size No.	Q'ty
167	Slide Bracket		1	236	Start Switch		1
168	Adjusting Nut		1	237	Power Indicator Light		1
168-1	Set Screw	M6×8	1	238	Pump Start Switch		1
169	Slide Plate		2	239	Emergency Stop Switch		1
170	Hex. Socket Cap Screw	M8×20	6	240	Bow Down Switch		1
170-1	Spring Washer	M8	6	241	Turning Slide (Short)		1
171	Bracket Slide		1	242	Washer	Ø51×5×13	1
171-1	Sleeve	M20×35	3	243	Hex. Cap Bolt	M12×20	1
171-2	Spring Washer	M12	3	244	Washer	M12	3
171-3	Hex. Cap Bolt	M12×65	3	245	Hex. Socket Cap Screw	M12×30	3
172	Blade Tension Scale		1	246	Set Screw	M8×10	6
172-1	Round Head Screw	M5×10	2	247	Nut	Ø40 M16×2	2
173	Spring Supporting Shaft		1	248	Washer	38×5×16.5	2
174	Belleville Spring	W=2.5mm	16	249	Handle Assembly		1
175	Stop Flange		1	250	Adjustable Handle		1
175-1	Set Screw	M8×20	2	251	Bar Stop		1
176	Limit Switch	1307	1	252	Nut	1/2	1
176-1	Round Head Screw	5/32" ×1	2	253	Hex. Socket Cap Screw	1/2×4"	1
176-2	Washer	M4	2	254	Rivet		4
176-3	Nut	M4	2	255	Scale		1
177	Cover		1	256	Bar Stop Rod (Long)	22×755	1
177-1	Hex. Cap Bolt	M6×12	2	257	Joint		1
177-2	Spring Washer	M6	2	258	Set Screw	M8×10	2
177-3	Washer	M6	2	259	Handle	M8×30	1
178	Rubber Cover		1	260	Bar Stop Rod (Short)	36×125	1
179	Electrical Wire	0.5/2C×430cm	1	261	Set Screw	M6×8	1
180A	Eccentric Sleeve Assembly		2	262	Hydraulic Cylinder (Vise)		1
180B	Sleeve Assembly		2	262-1	Hex. Socket Cap Screw	M8×30	4
201	Chip Tray		1	262-2	Spring Washer	M8	4
202	Washer	M8	1	262-3	Washer	M8	4
202-1	Spring Washer	M8	1	263	Block		1
203	Hex. Cap Bolt	M8×16	1	263-1	Flat Head Screw	3/16×1/4	2
204	Turning Slide (Long)		1	264	Guard		1
205	Bracket		1	265	Round Head Screw	5/32×1 1/4	2
206	Hex. Socket Cap Screw	M6×25	2	266	Hex. Cap Bolt	M6×8	2
207	Nut	M10	1	267	Spring Washer	M6	2
208	Hex. Cap Bolt	M10×30	1	267-1	Washer	M6	2
209	Adjustable Handle		1	268	Limit Switch	1307	1
210	Spring Washer	M12	3	269	Nut	5/32	2
211	Hex. Socket Cap Screw	M12×30	3	270	Shaft		1
212	Set Screw	M8×10	6	271	Fixed Vise Jaw		1
213	Bracket		1	272	Spring Washer	M12	3
214	Hex. Socket Cap Screw	M6×30	2	273	Hex. Socket Cap Screw	M12×40	3
215	Nut	M10	1	274	Set Bracket		1
216	Hex. Cap Bolt	M10×30	1	275	Hex. Cap Bolt	M12×35	2
217	Hex. Socket Cap Screw	M6×16	8	276	Washer	M12	2
217-1	Spring Washer	M6	8	276-1	Spring Washer	M12	2
218	Wire Box		1	277	Set Screw	M8×10	4
219	Spring Washer	M6	4	278	Chip Grate		1
220	Hex. Socket Cap Screw	M6×12	8	278-1	Hex. Cap Bolt	M10×20	2
222	Cover Plate		1	278-2	Spring Washer	M10	2
223	Set Ring		2	278-3	Washer	M10	2
224	Handle	M8×25	2	279	Bracket		1
225	Pipe		1	280	Nut		1
226	Round Head Screw	M5×10	4	281	Spring Washer	M8	2
227	Washer	M5	4	282	Hex. Socket Cap Screw	M6×20	2
228	Grip		2	283	Bushing		1
229	Control Box		1	284	Spring		1
230	Hydraulic Feed Valve		1	285	Lock Pin		1
231	Panel		1	286	Hollow Pin	3×18	1
231-1	Round Head Screw	M5×10	8				
232	Rapid Reverse Button		1				
233	Hydraulic Flow Control Switch		1				
234	Bow Up Switch		1				
235	Stop Switch		1				

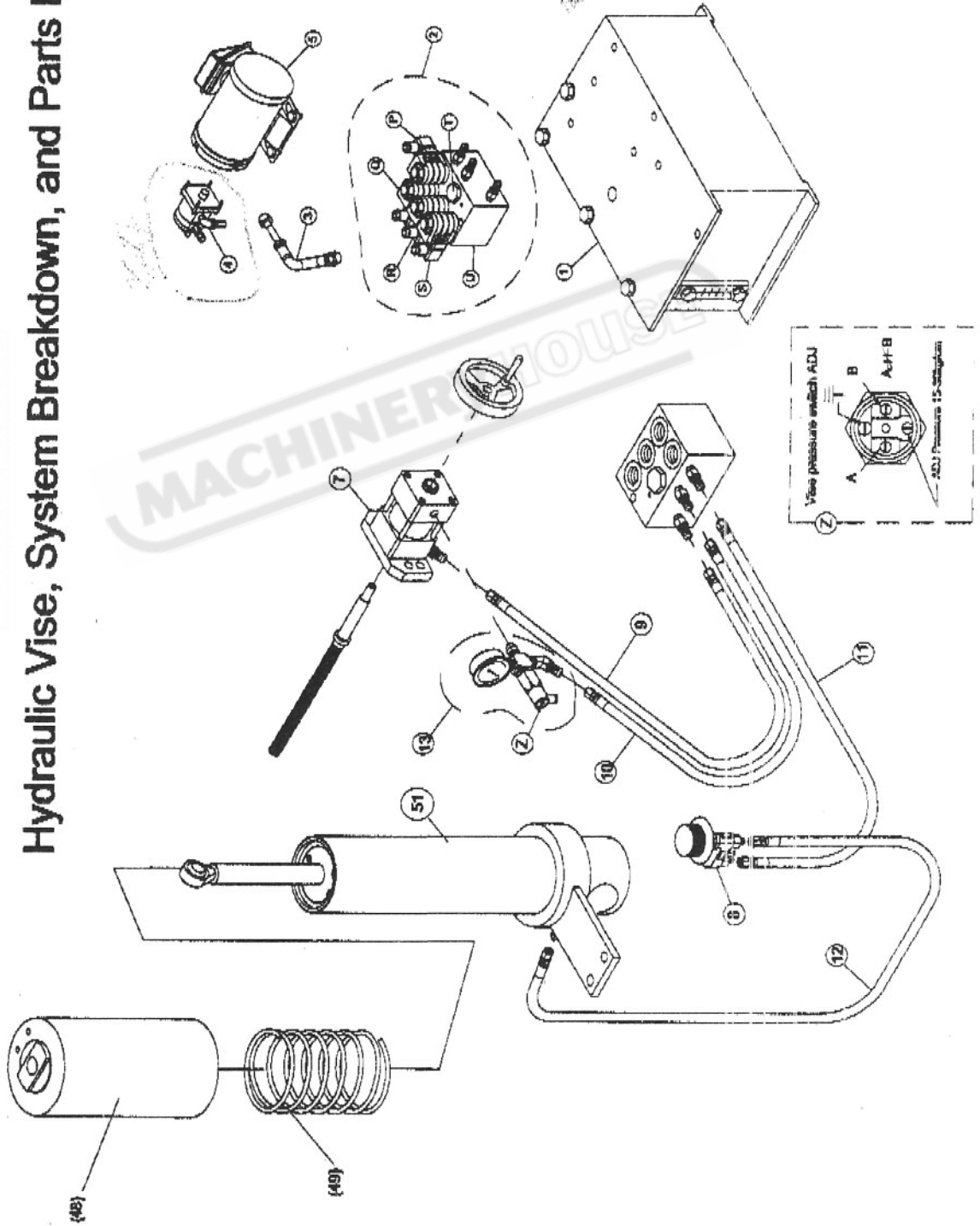


900823



900803

# Hydraulic Vise, System Breakdown, and Parts List



No	Description	QTY
1	Oil tank	
2	Solenoid check valves set	
3	Hose	
4	Pump	
5	Motor	
6	Flow control	
7	Vise hydraulic	
51	Lift hydraulic	
9	Hose 2.5mm 1/4H	
10	Hose 2.2mm 1/4H	
11	Hose 3.2mm 1/4H	
12	Hose 3.4mm 1/4H	
13	Pressure switch set	

No.	Description	QTY
No. 2	Solenoid check valve set	
P	Solenoid check valve (arm down)	
Q	Solenoid check valve (arm up)	
R	Solenoid check valve (vise forward)	
S	Solenoid check valve (vise Backward)	
T	Pilot check	
U	Manifold body	